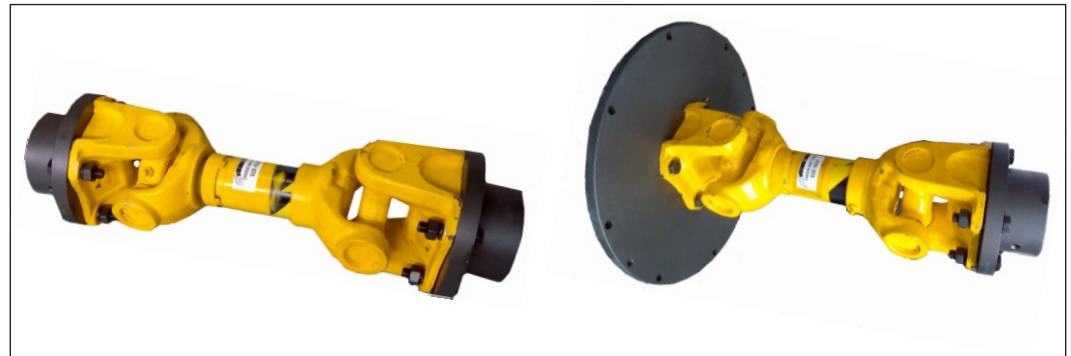


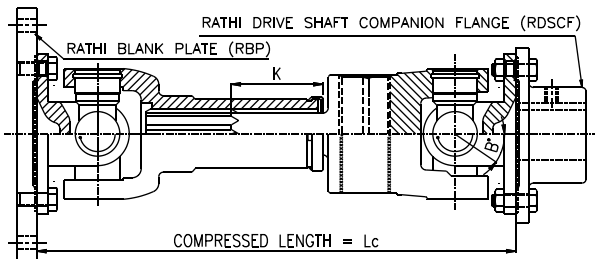
FEATURES:

- Easy in Installation
- Length Compensation
- Highly Efficient
- Low Maintenance

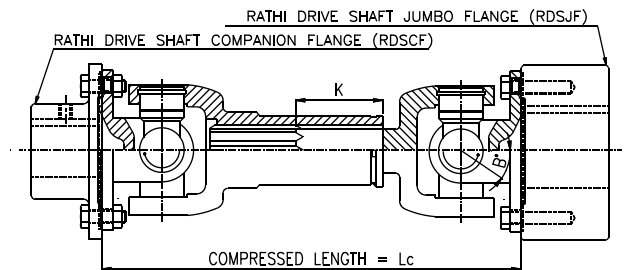


TECHNICAL DATA

TUBULAR DRIVE SHAFT



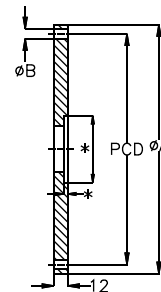
SUPER SHORT DRIVE SHAFT



RATHI DRIVE SHAFT COUPLING (RDC)

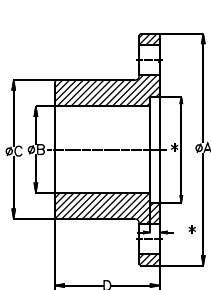
| RDC Size | Angle B (Max.) | Slip Movement K | Compressed Length (LC) | |
|-----------------|----------------|-----------------|------------------------|------|
| | | | Min. | Max. |
| 1140 ● | 14° | 43 | 260 | 2500 |
| 1260 ● / 1310 ● | 20° | 50 | 335 | 2500 |
| 1350 ■ / 1410 ■ | 18° | 57 | 356 | 2500 |
| 1510 ● / 1550 ■ | 18° | 60 | 464/425 | 2500 |
| 1600 ● | 20° | 70 | 533 | 2500 |

RATHI BLANK PLATE (RBP) - SAE STD.



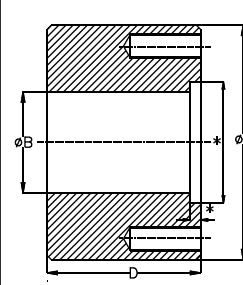
| RBP Size | ØA | ØB | PCD | No. of Holes |
|---------------|---------|--------|---------|--------------|
| RBP - 6 1/2" | 8 1/2" | 21/64" | 7 7/8" | 6 |
| RBP - 7 1/2" | 9 1/2" | 21/64" | 8 3/4" | 8 |
| RBP - 8" | 10 3/8" | 13/32" | 9 5/8" | 6 |
| RBP - 10" | 12 3/8" | 13/32" | 11 5/8" | 8 |
| RBP - 11 1/2" | 13 7/8" | 13/32" | 13 1/8" | 8 |

RATHI DRIVE SHAFT COMPANION FLANGE (RDSCF)



| RDSCF Size | ØA | ØC | Max. Bore B | D |
|-----------------|-----|-----|-------------|----|
| 1140 ● | 88 | 51 | 30 | 41 |
| 1260 ● / 1310 ● | 97 | 60 | 38 | 48 |
| 1350 ■ / 1410 ■ | 125 | 72 | 42 | 48 |
| 1510 ● / 1550 ■ | 150 | 94 | 55 | 61 |
| 1600 ● | 175 | 130 | 75 | 76 |

RATHI DRIVE SHAFT JUMBO FLANGE (RDSJF)



| RDSJF Size | ØA | Max. Bore B | D |
|-----------------|-----|-------------|-----|
| 1140 ● | 88 | 55 | 50 |
| 1260 ● / 1310 ● | 97 | 60 | 63 |
| 1350 ■ / 1410 ■ | 125 | 70 | 76 |
| 1510 ● / 1550 ■ | 150 | 95 | 100 |
| 1600 ● | 175 | 114 | 127 |

* Dimensions to suit respective drive shaft

● Round Flange ■ Rectangular Flange

All Dimensions are in mm otherwise specified

APPLICATIONS :-

Steel Plants & Rolling Mills, Textile, Paper & Printing Machinery, Cranes & Pump drive, Vibrating screens, Cement Industries, Earth Moving Equipments, etc.

SELECTION DATA

SELECTION PROCEDURE:-

- Locate the coupling size and torque (T) w.r.t. application speed (N) & power rating (P) from enclosed chart or graph.
- Determine appropriate service factor (SF) from service factor table.
- Calculate application maximum torque (T_M) using equation.
 $T_M = T \times SF$
- Ensure that application maximum torque (T_M) is less than short duration torque (T_s) from the table otherwise select next higher size.
- Ensure that maximum bore capacity of Companion or Jumbo flange is more than shaft dia. Otherwise select next higher size.
- If joint angle is more than 3° &/or bearing life required is more than 5000 Hrs. contact RATHI.

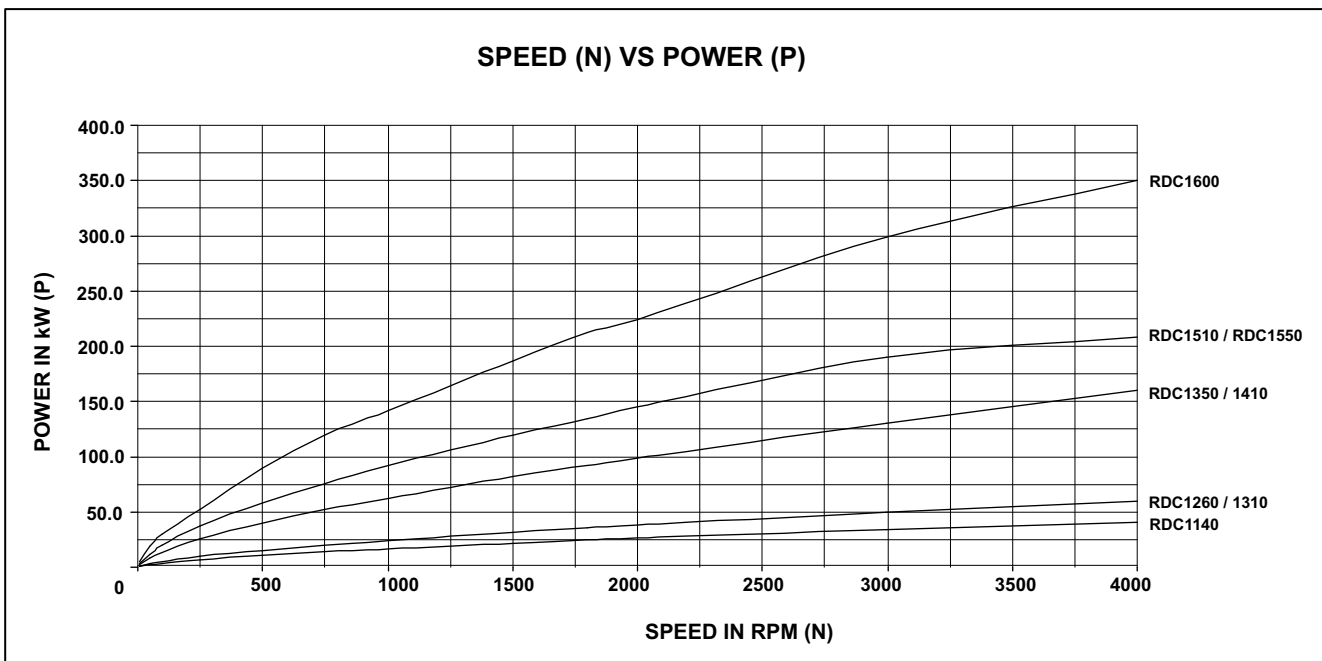
SERVICE FACTOR TABLE:

| | |
|--|------------|
| Light shock loads (continuous loads) Centrifugal pumps, fans, conveyors | 1.1 to 1.5 |
| Medium shock loads (Non-continuous loads) Centrifugal pumps & conveyors, printing machinery, small paper & textile machinery, Bar mills. | 1.5 to 2 |
| Heavy shock loads Roller tables, Presses, Heavy tube mills, pinch roll, Bending machine, Compressor, marine transmissions | 2 to 3 |
| Extra Heavy shock loads Roller tables, cold rolling mills, vibrating conveyors. | 3 to 6 |

| SIZE → SPEED ↓ | RDC-1140 | | RDC-1260 / 1310 | | RDC-1350 / 1410 | | RDC-1510 / 1550 | | RDC-1600 | |
|-------------------|----------|------|-----------------|------|-----------------|-------|-----------------|-------|----------|-------|
| | T | P | T | P | T | P | T | P | T | P |
| N ↓ (RPM) | N-m | kW | N-m | kW | N-m | kW | N-m | kW | N-m | kW |
| 10 | 571 | 0.6 | 800 | 0.8 | 2100 | 2.2 | 3200 | 3.4 | 4500 | 4.7 |
| 50 | 427 | 2.2 | 670 | 3.5 | 1610 | 8.4 | 2279 | 11.9 | 3704 | 19.4 |
| 100 | 356 | 3.7 | 513 | 5.4 | 1282 | 13.4 | 1923 | 20.1 | 2849 | 29.8 |
| 250 | 259 | 6.8 | 370 | 9.7 | 969 | 25.4 | 1425 | 37.3 | 1994 | 52.2 |
| 500 | 199 | 10.4 | 285 | 14.9 | 755 | 39.5 | 1111 | 58.2 | 1710 | 89.5 |
| 750 | 180 | 14.1 | 256 | 20.1 | 665 | 52.2 | 959 | 75.3 | 1520 | 119.4 |
| 1000 | 157 | 16.4 | 228 | 23.9 | 598 | 62.6 | 876 | 91.7 | 1353 | 141.7 |
| 1500 | 138 | 21.7 | 199 | 31.3 | 522 | 82.0 | 760 | 119.4 | 1187 | 186.5 |
| 1800 | 131 | 24.7 | 190 | 35.8 | 487 | 91.8 | 712 | 134.2 | 1128 | 212.6 |
| 2000 | 125 | 26.2 | 182 | 38.1 | 470 | 98.4 | 694 | 145.4 | 1068 | 223.7 |
| 3000 | 107 | 33.6 | 159 | 50.0 | 416 | 130.7 | 605 | 190.1 | 950 | 298.5 |
| 4000 | 98 | 41.1 | 142 | 59.5 | 383 | 160.4 | 498 | 208.6 | 837 | 350.6 |

Nominal Ratings for smooth load, joint angle 3° per side max., 5000 hrs life at S.F.=1

SPEED (N) VS POWER (P)



| Coupling Size | 1140 | 1260 / 1310 | 1350 / 1410 | 1510 / 1550 | 1600 |
|-------------------------------------|------|-------------|-------------|-------------|------|
| Short Duration Torque N-m (T_s) | 571 | 800 | 2100 | 3300 | 4500 |

- While ordering place order for individual part.
 - All dimensions are in mm unless otherwise specified.
- In view of our constant endeavour to improve quality of our products, we reserve the right to alter or change specifications without prior notice. This document is the intellectual property of Rathi Transpower Pvt. Ltd. and subject to copyright.



Rathi Transpower Pvt Ltd
 Rathi Chambers, 7, Deccan College Road,
 Pune 411 006.(INDIA)
 Phone : 91-20-30517201
 Fax : 91-20-30517212
 E-mail : enquiry@rathigroup.com
 Website : www.rathicouplings.com

Distributor